

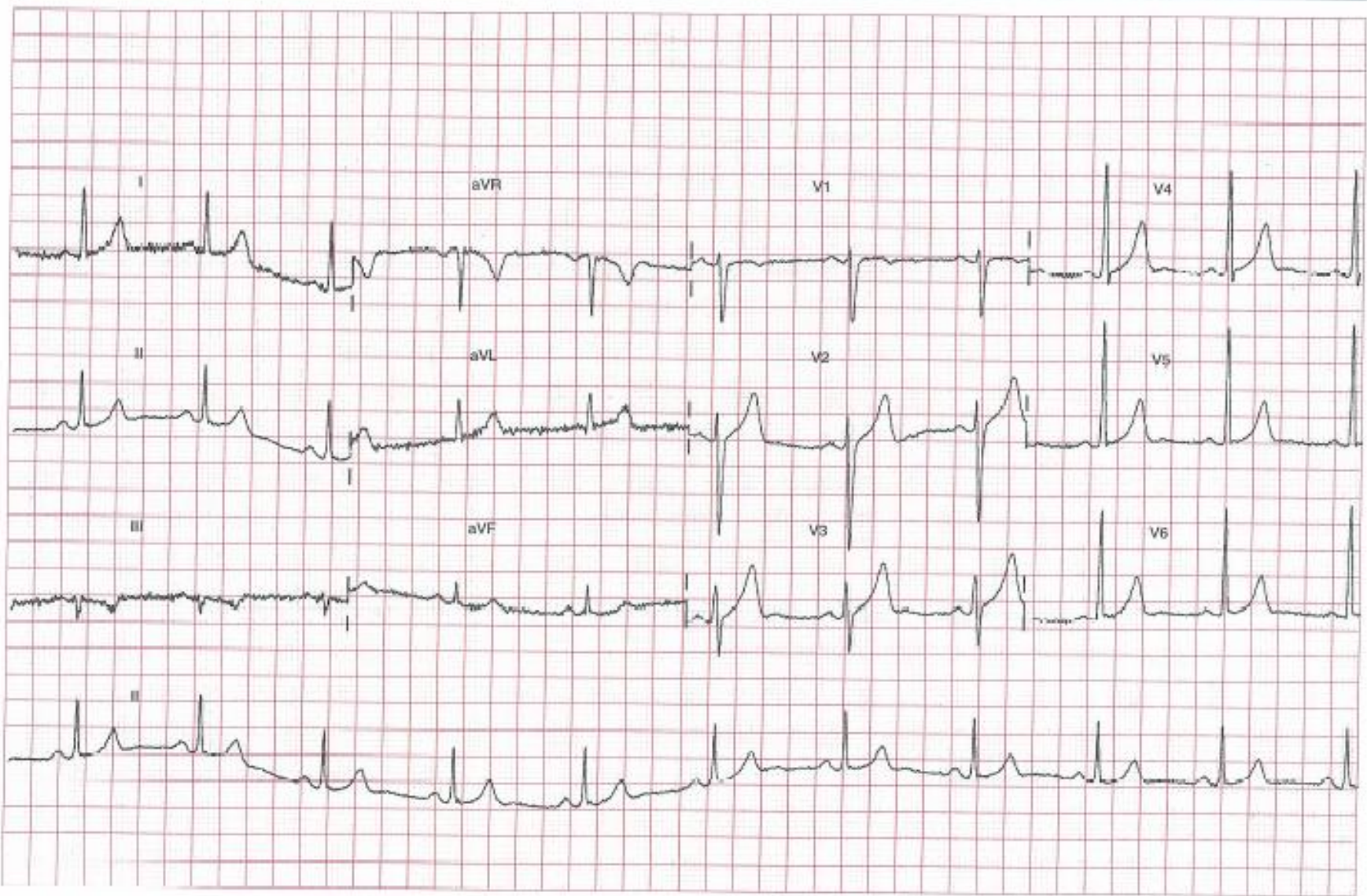


Rapid Fire ECG interpretation

Milind Dhond MD, FACC



A 29-year-old healthy man

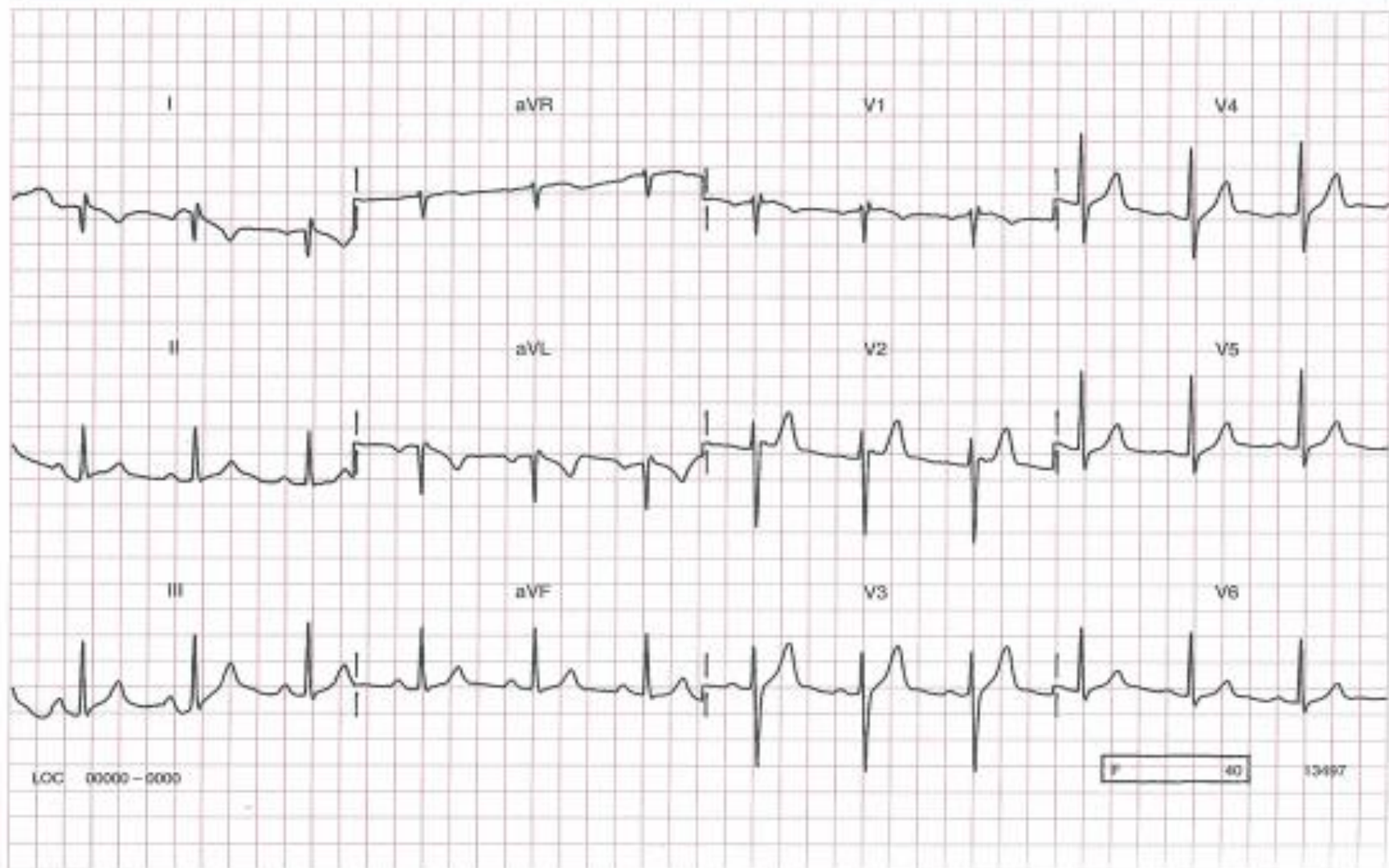


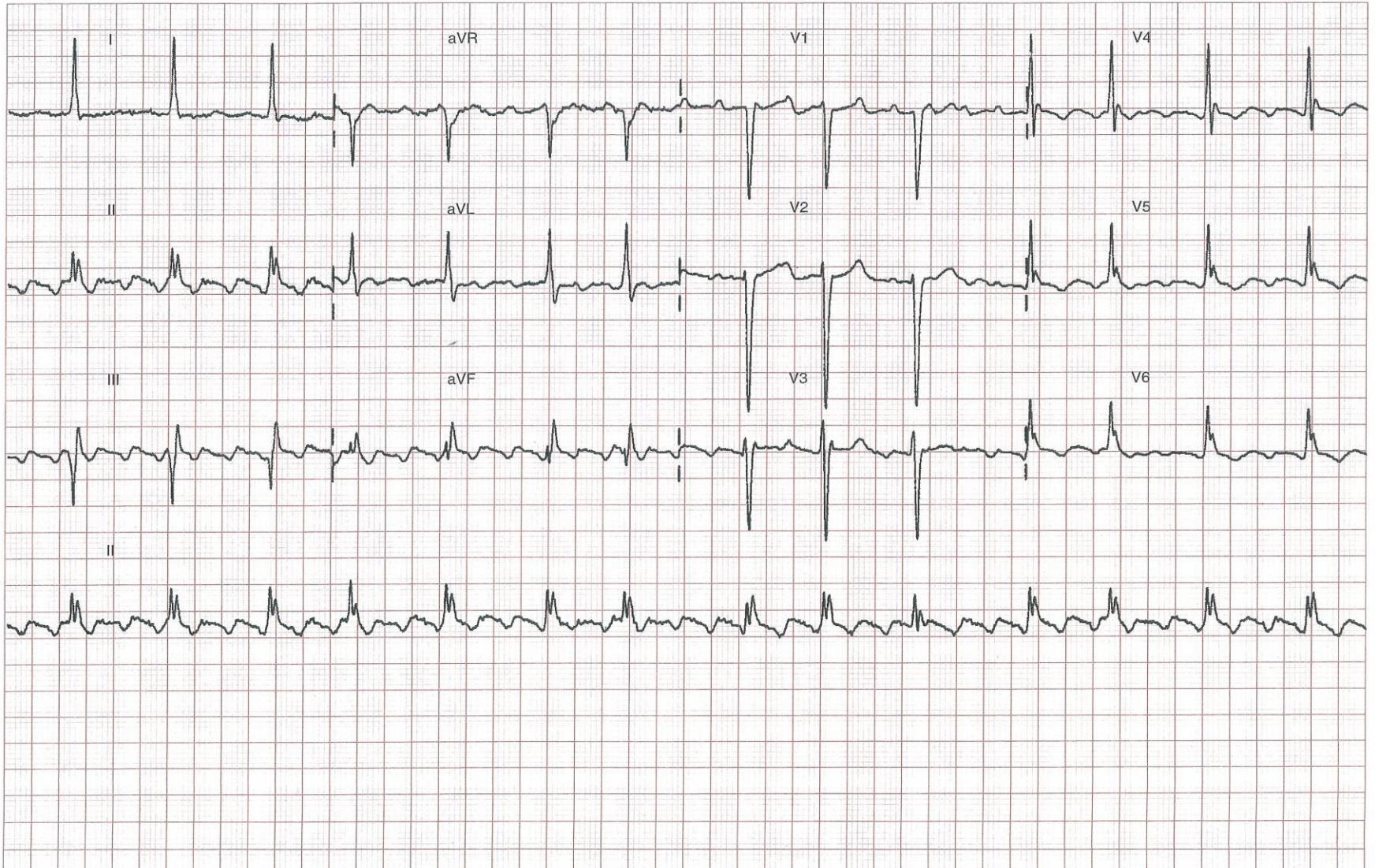


What is the clinical story?

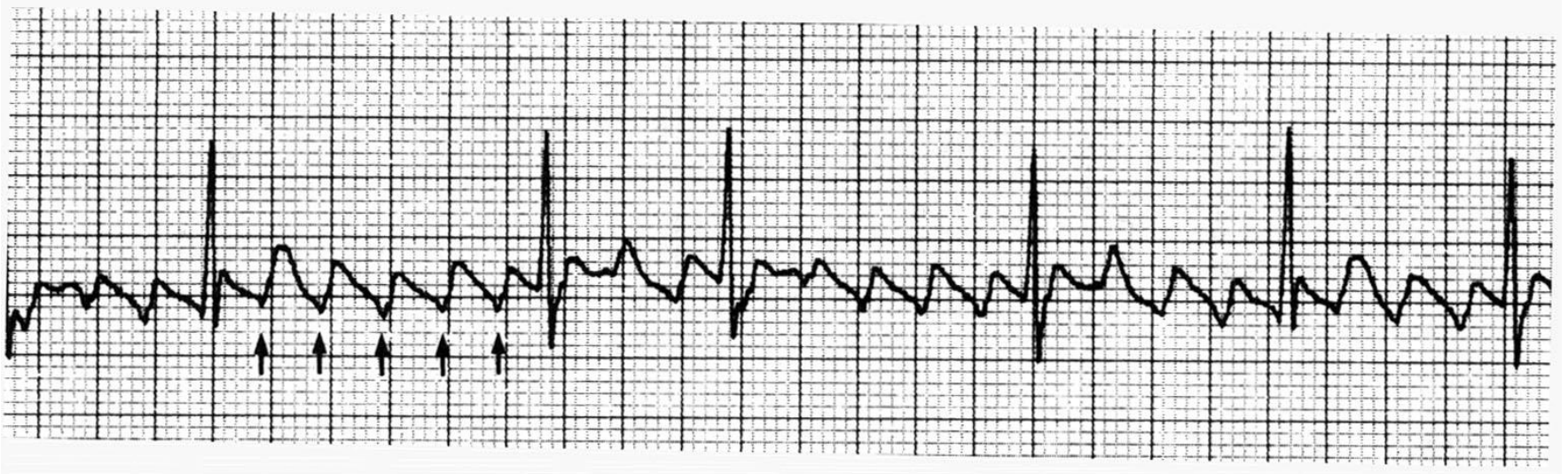
CASE 85

A well 26-year-old medical student participating in a phase I clinical trial



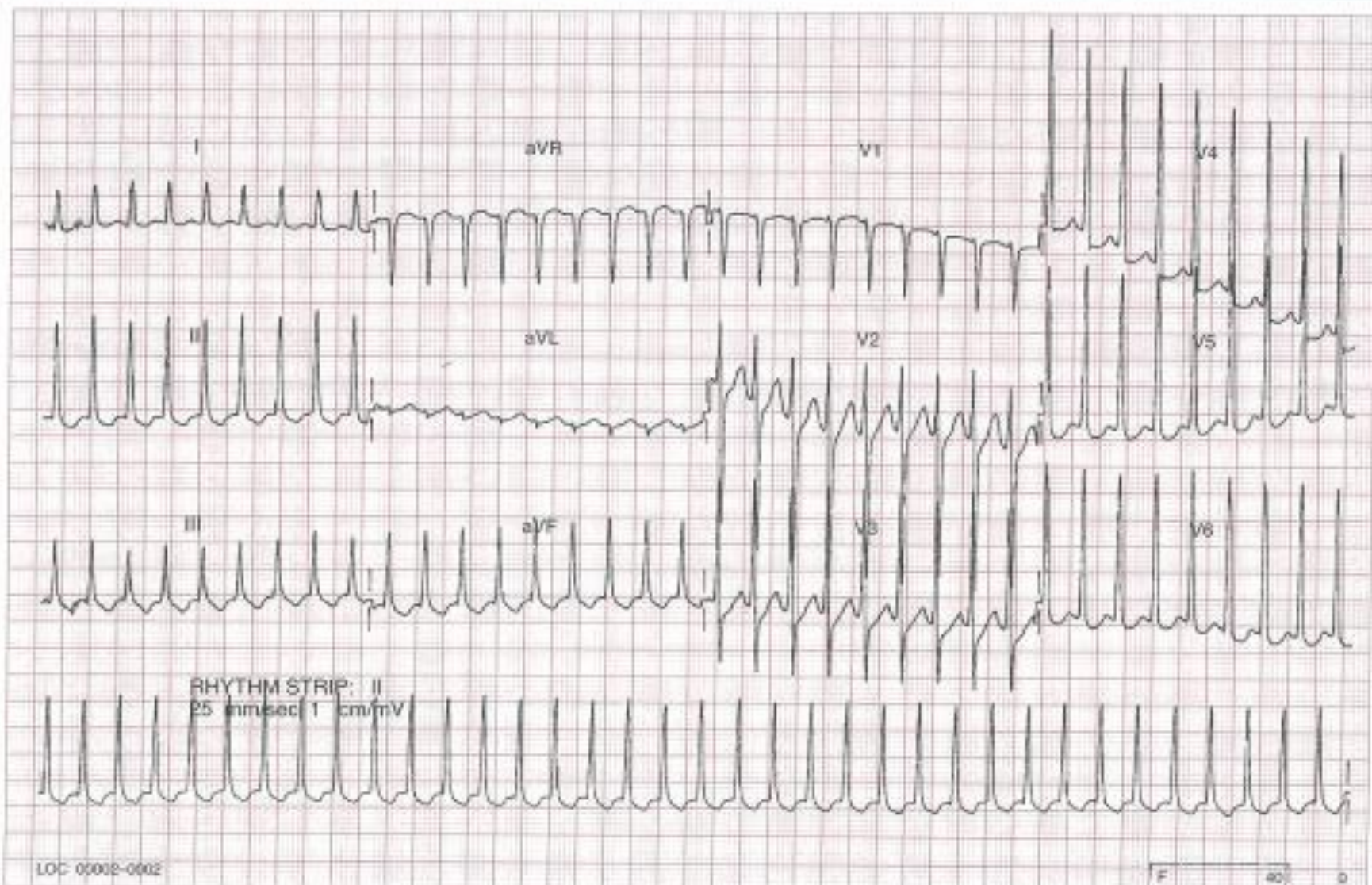
CASE 15**A 60-year-old man with a history of palpitations controlled on medication**

Atrial Flutter



CASE 18

A 26-year-old man with palpitations



CASE 21

A 16-year-old boy with recurrent faints

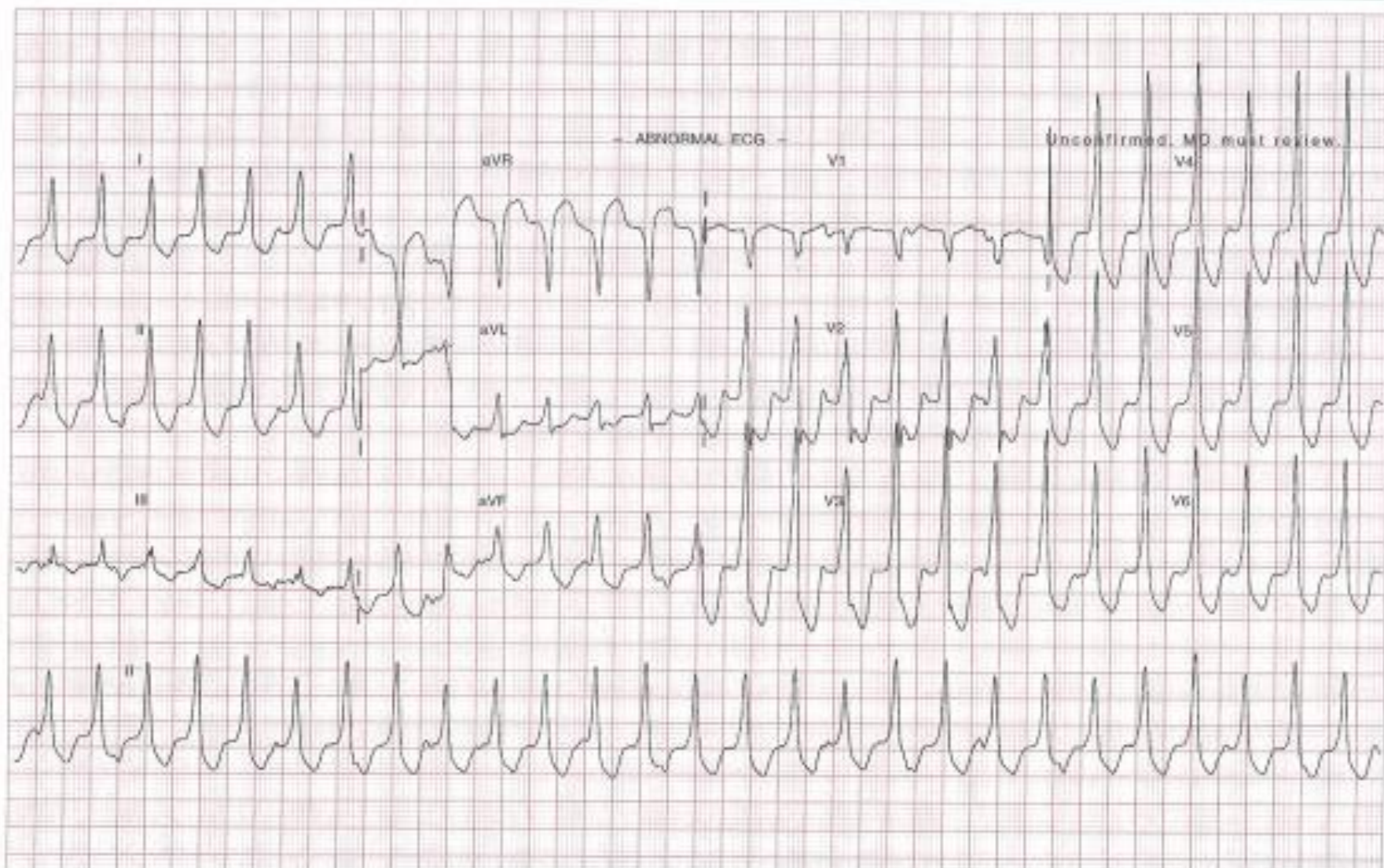




Is the patient clinically stable?

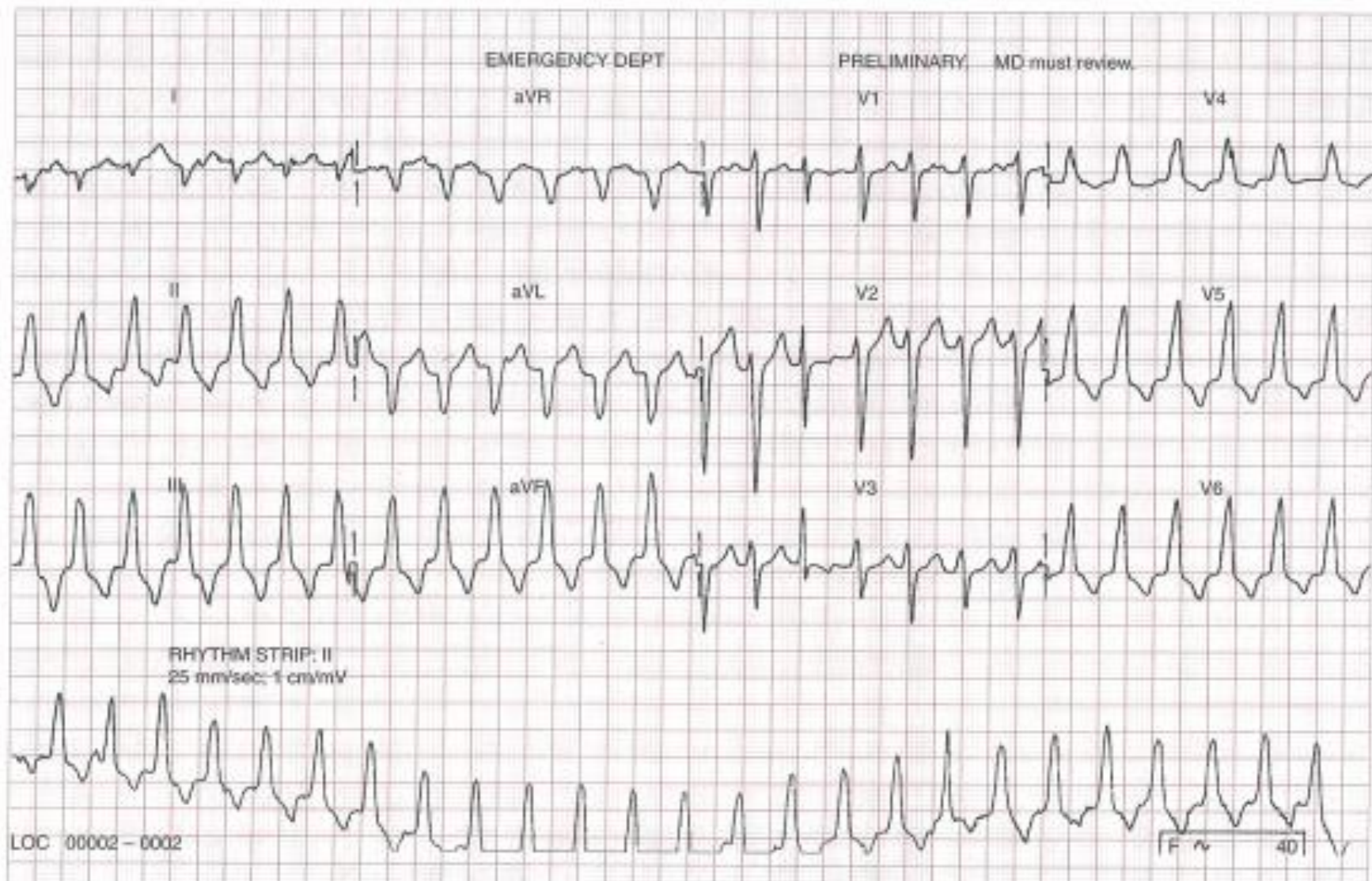
CASE 27

A 55-year-old man, 2 weeks after a myocardial infarction, BP 130/80



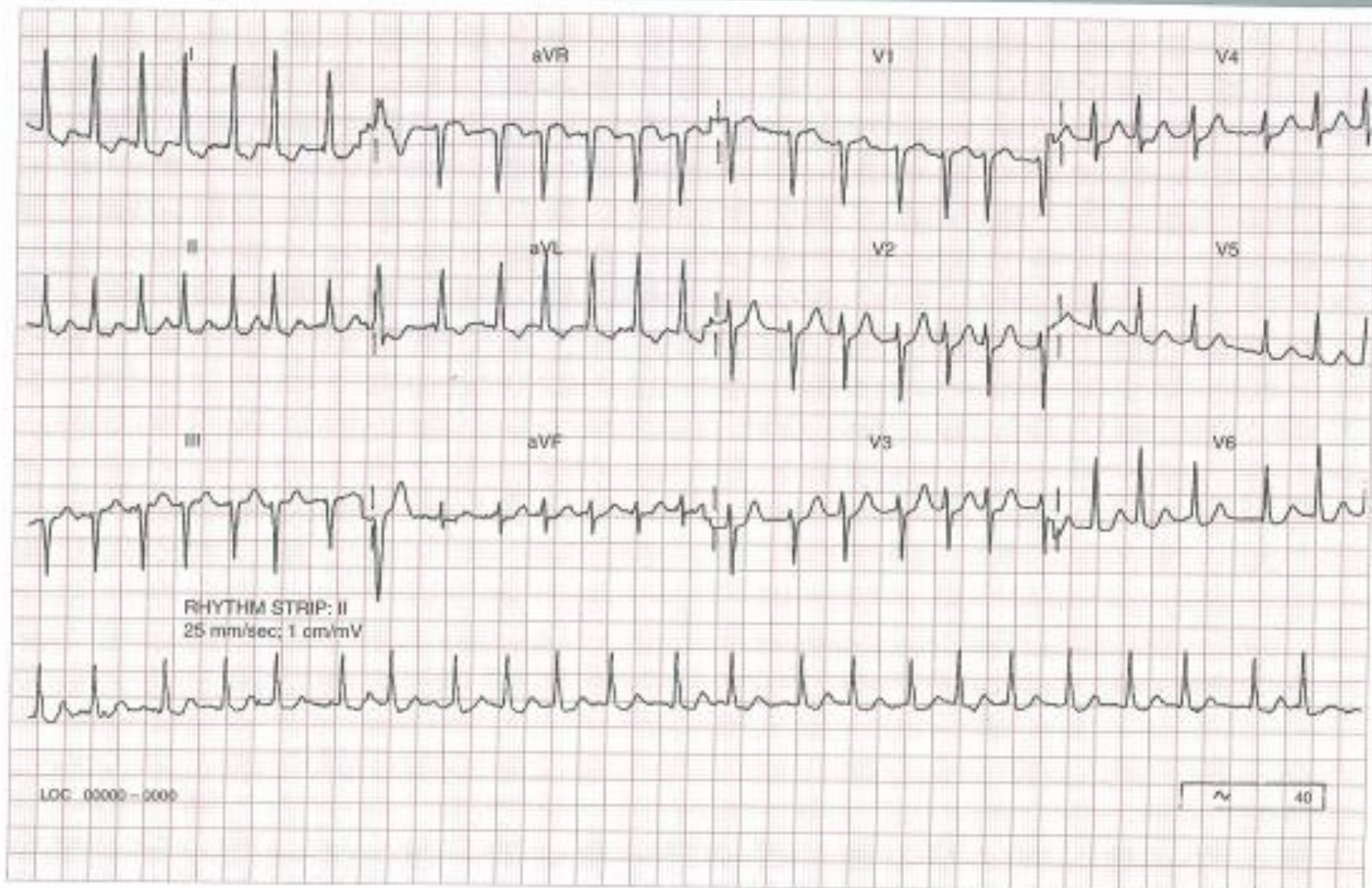
CASE 28

A 24-year-old lady, previously well, with 6 hours of palpitations, BP 120/80

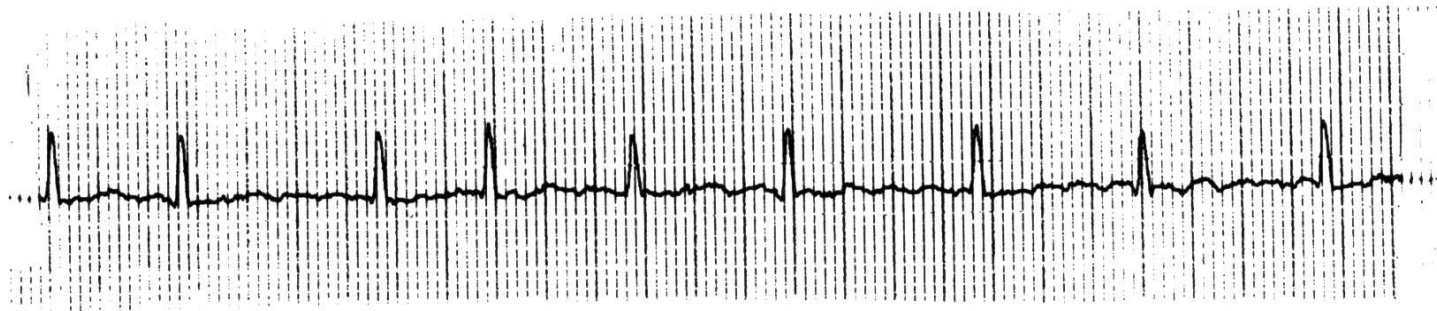


CASE 11

A 65-year-old lady with palpitations

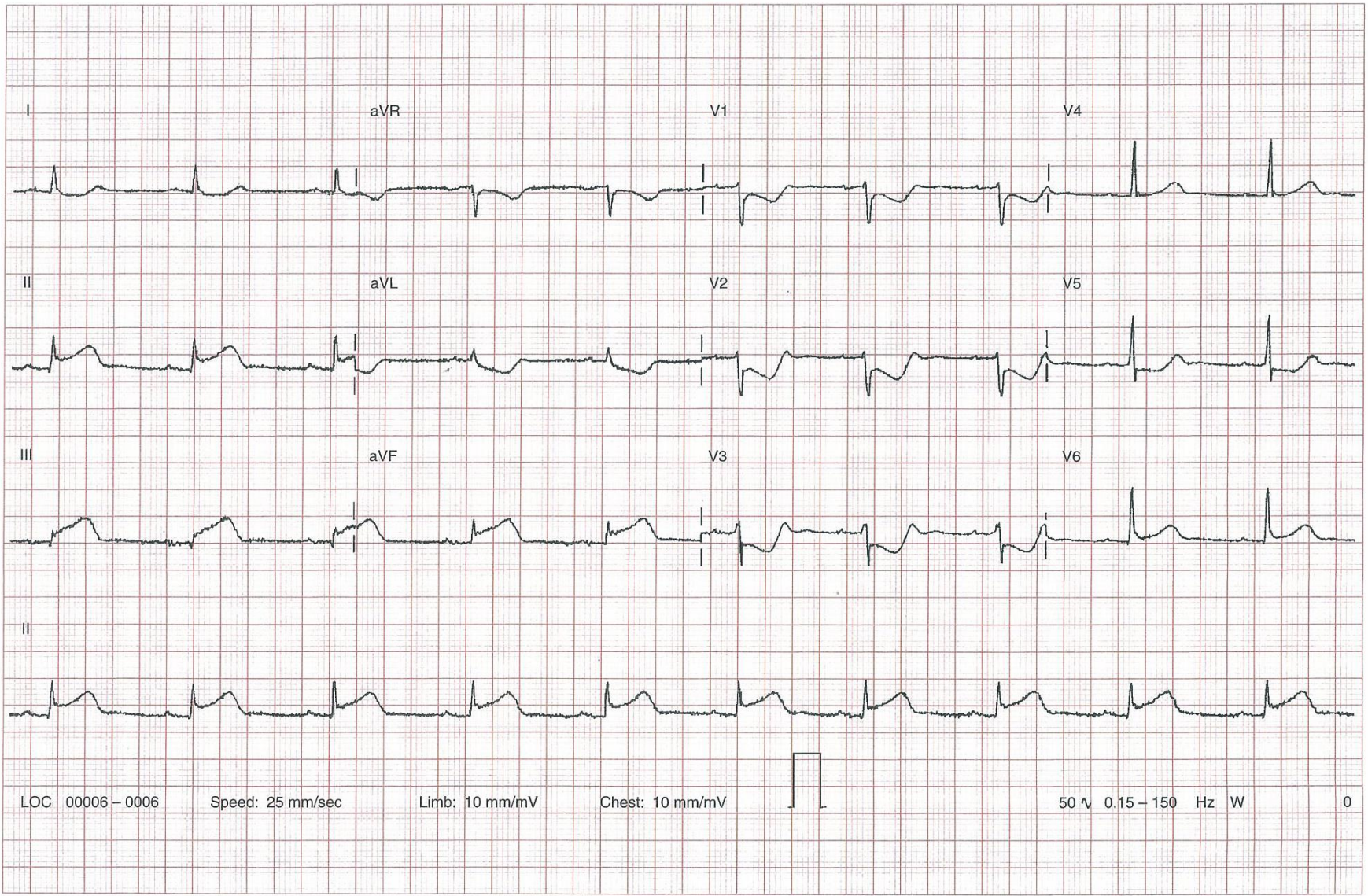


Atrial Fibrillation



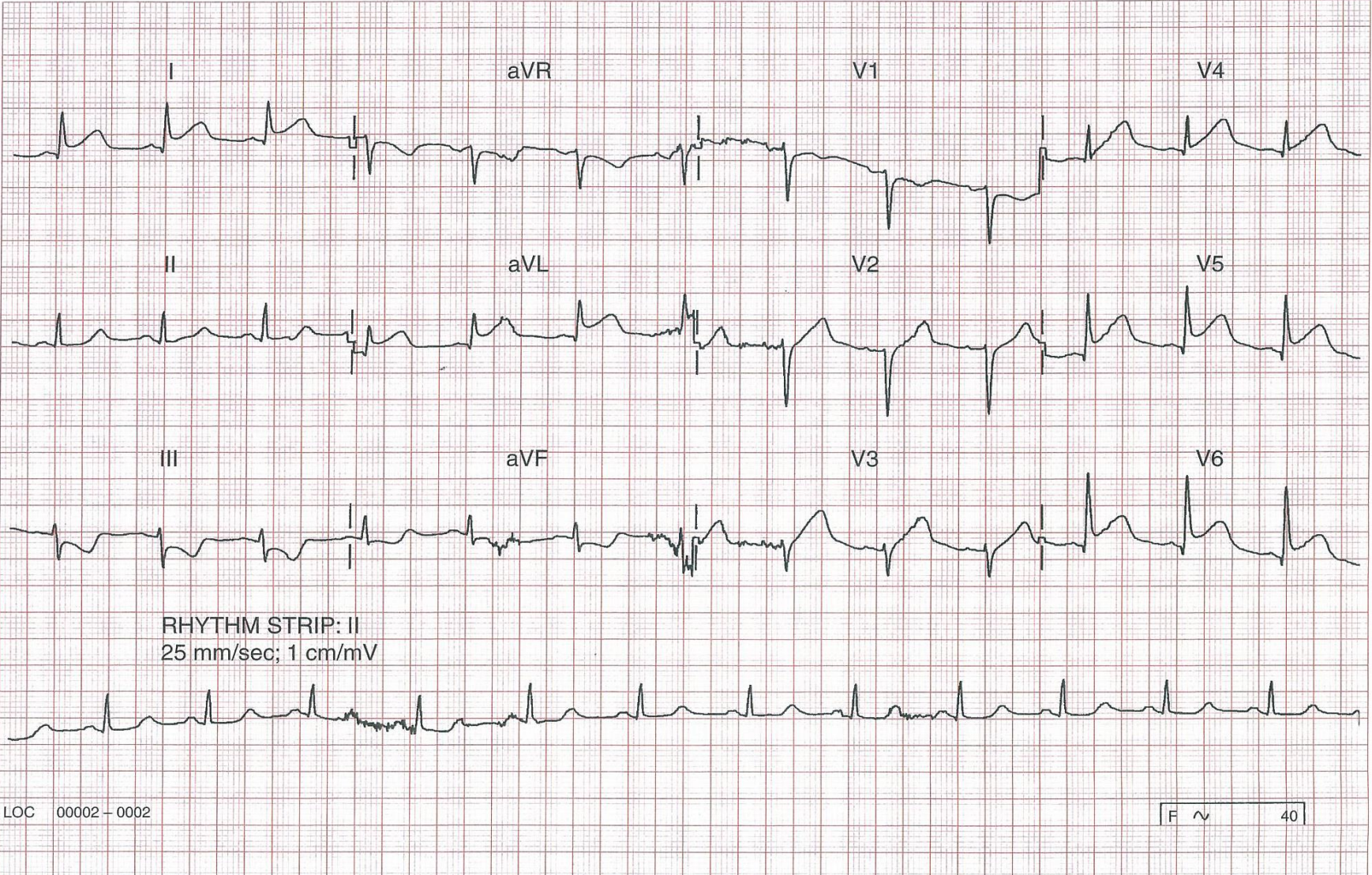
CASE 63

A 56-year-old man with chest pain and vomiting for 90 minutes



CASE 60

A 67-year-old lady with 3 hours of chest pain

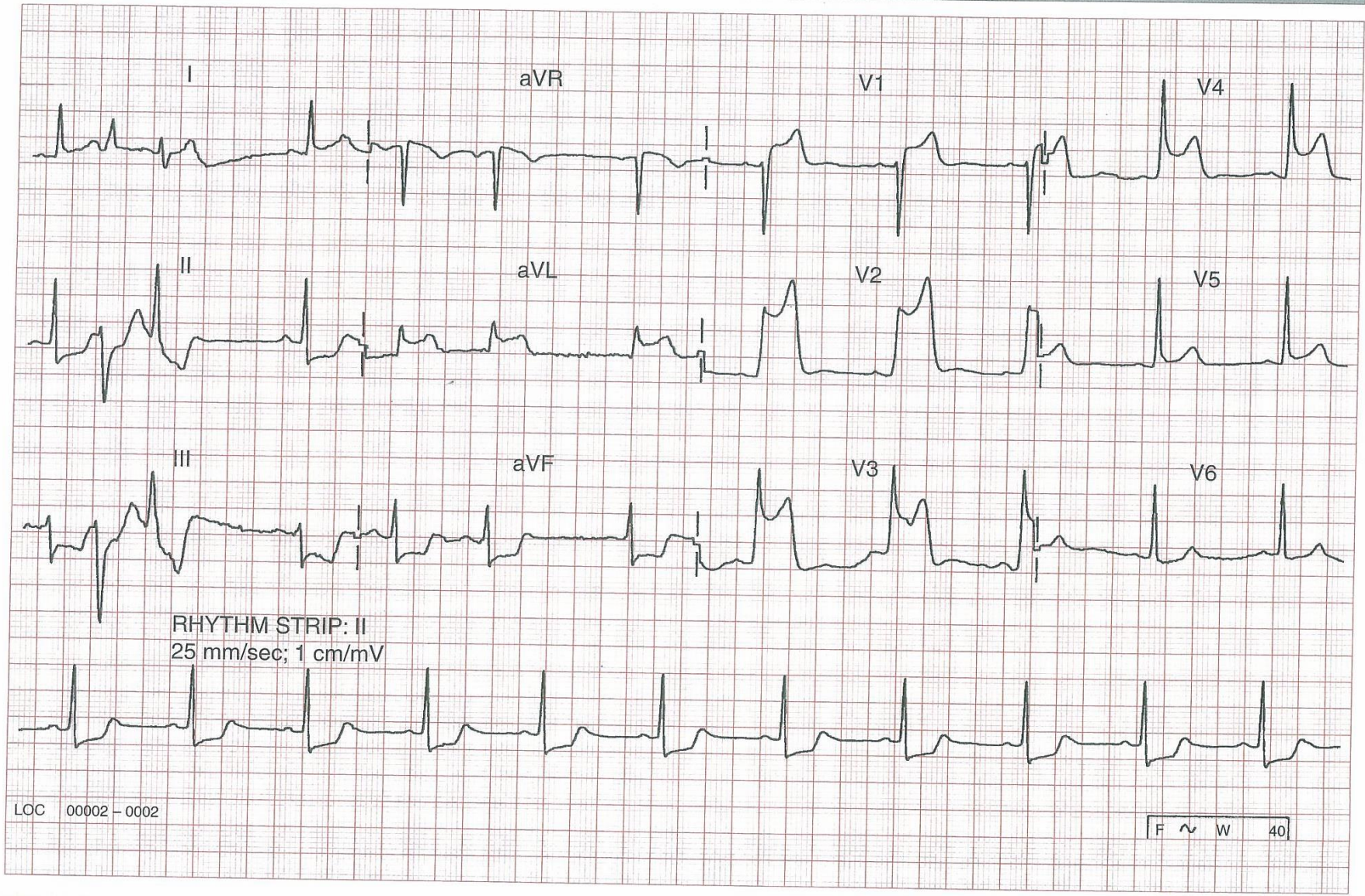


LOC 00002-0002

F ~ 40

CASE 59

A 36-year-old man with 40 minutes of 'crushing' chest pain

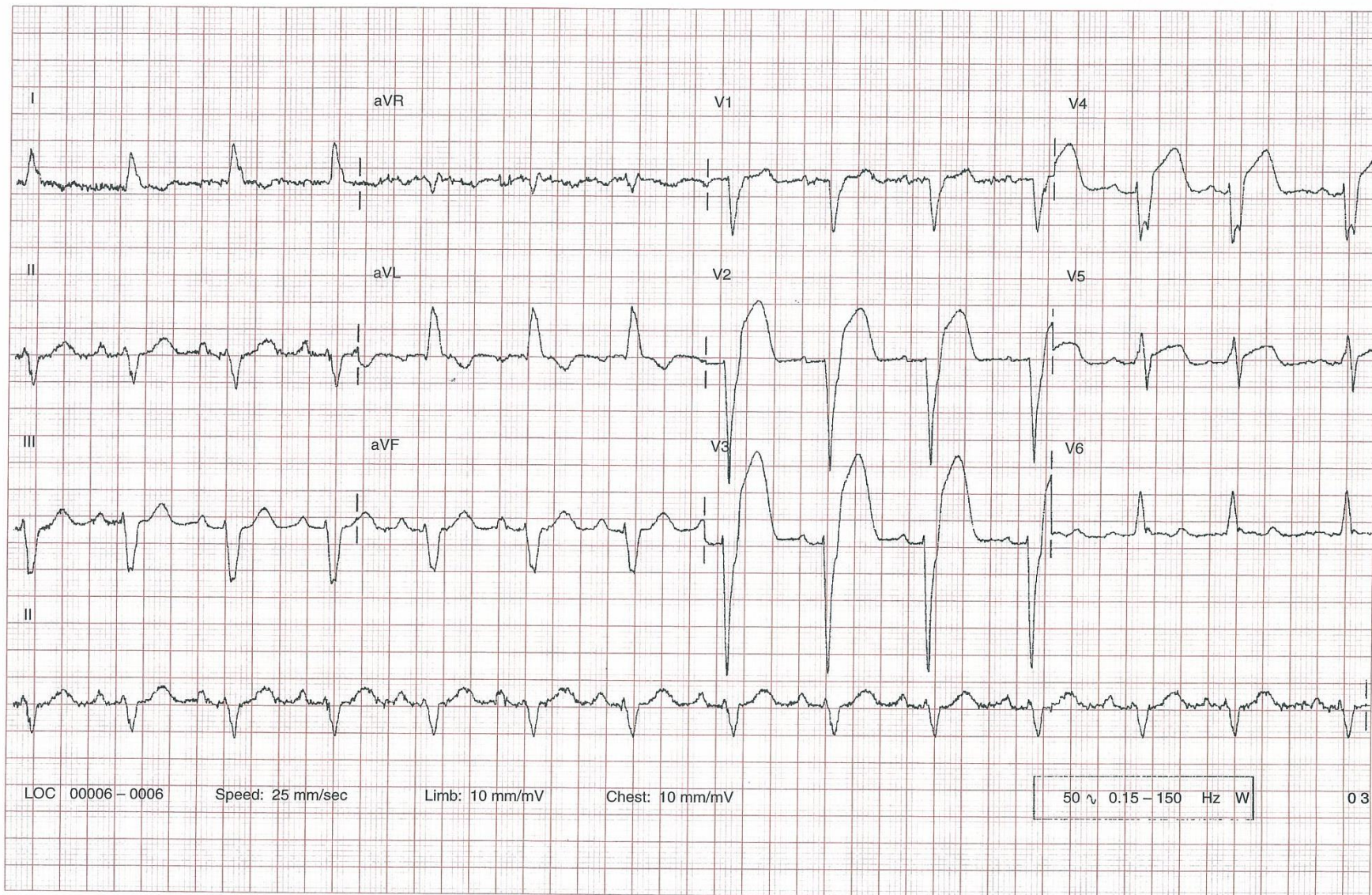


LOC 00002 - 0002

F ~ W 40

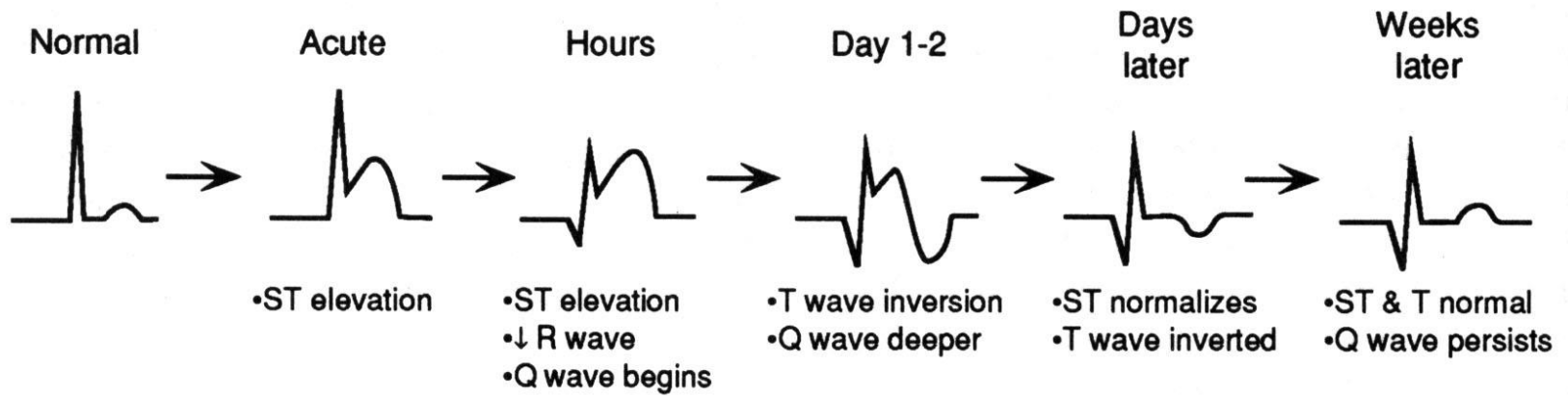
CASE 67

A 74-year-old lady with severe 'crushing' chest pain for 90 minutes



STEMI

Q-wave Myocardial Infarction



Look by anatomy

1. V1, V2 = septum (LAD).

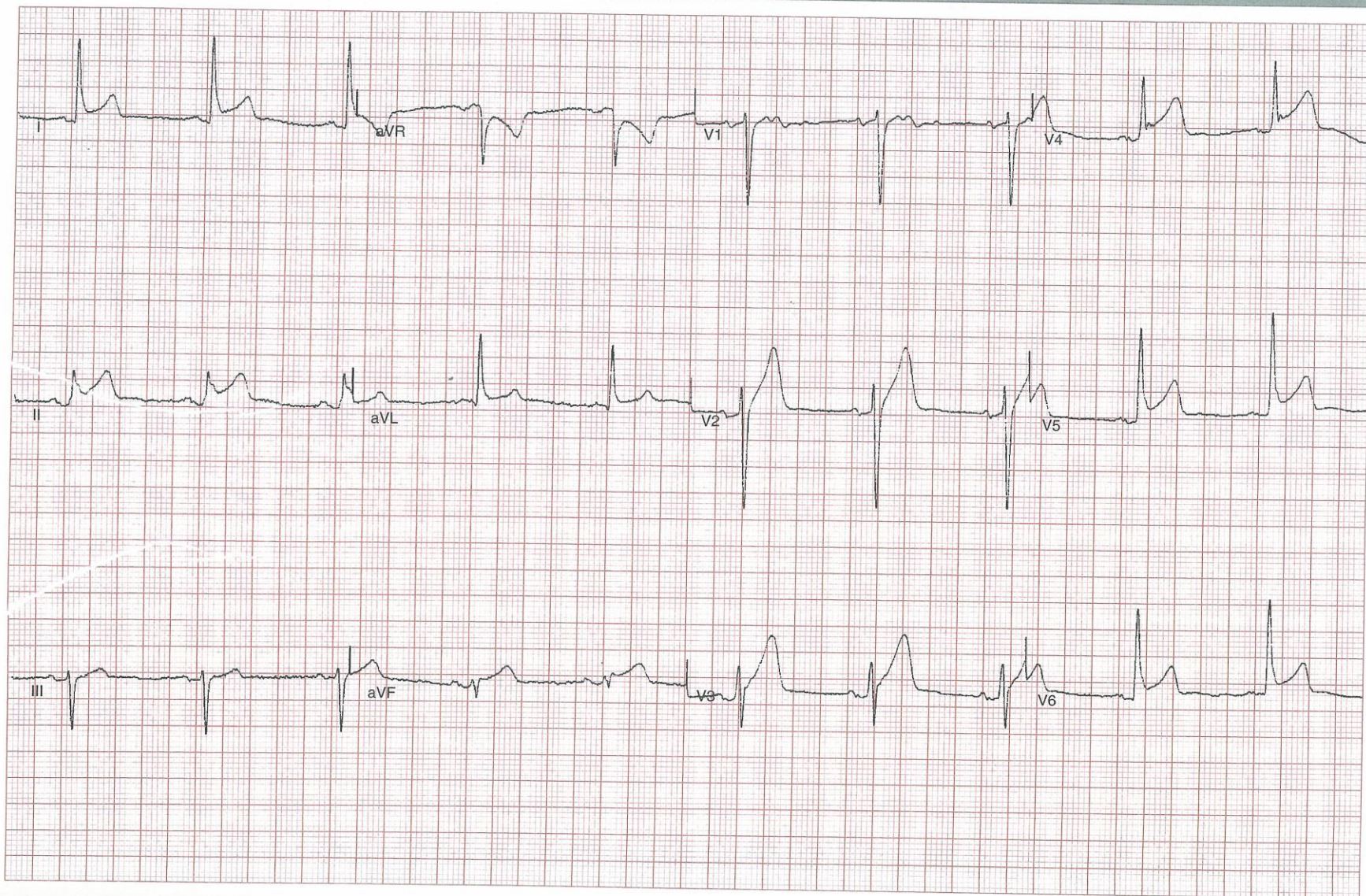
2. V2, V3, V4 = anterior (LAD)

3. V5, V6, I, aVL = lateral (LCX)

4. II, III, aVF = inferior (RCA)

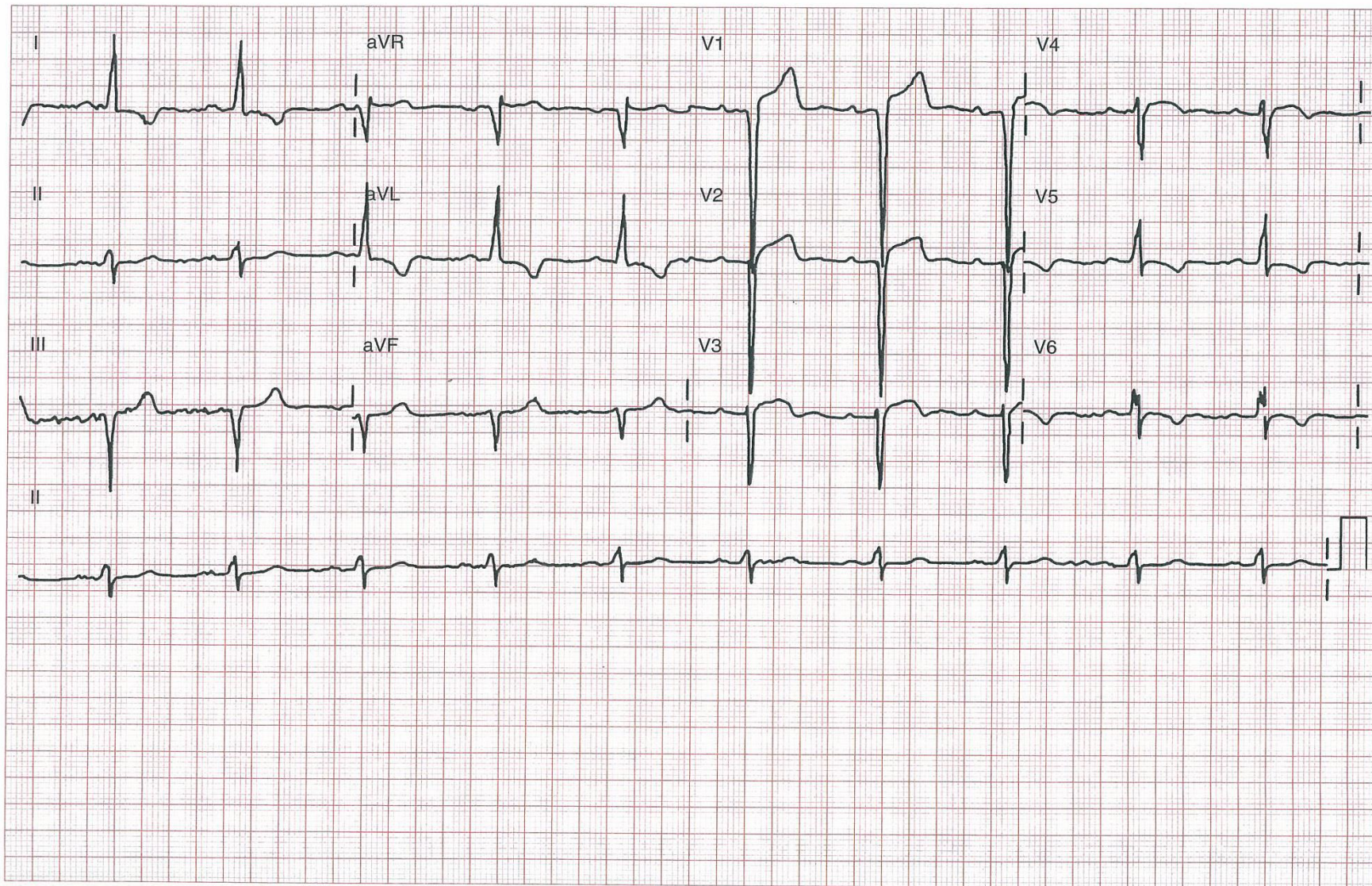
CASE 92

A 53-year-old man with pleuritic chest pain 1 week after an MI



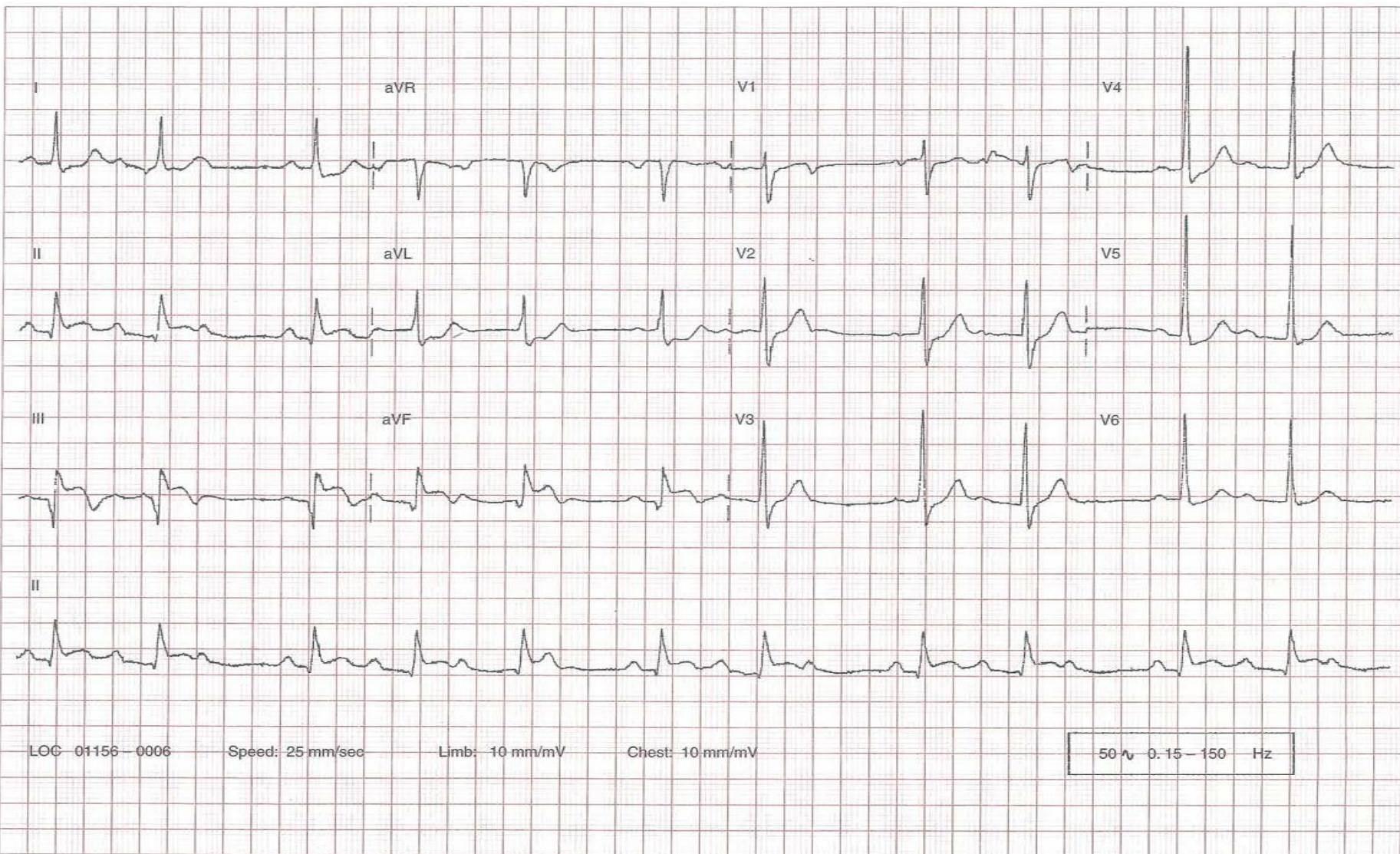
CASE 91

An 83-year-old man with a history of an extensive anterior MI 8 years ago



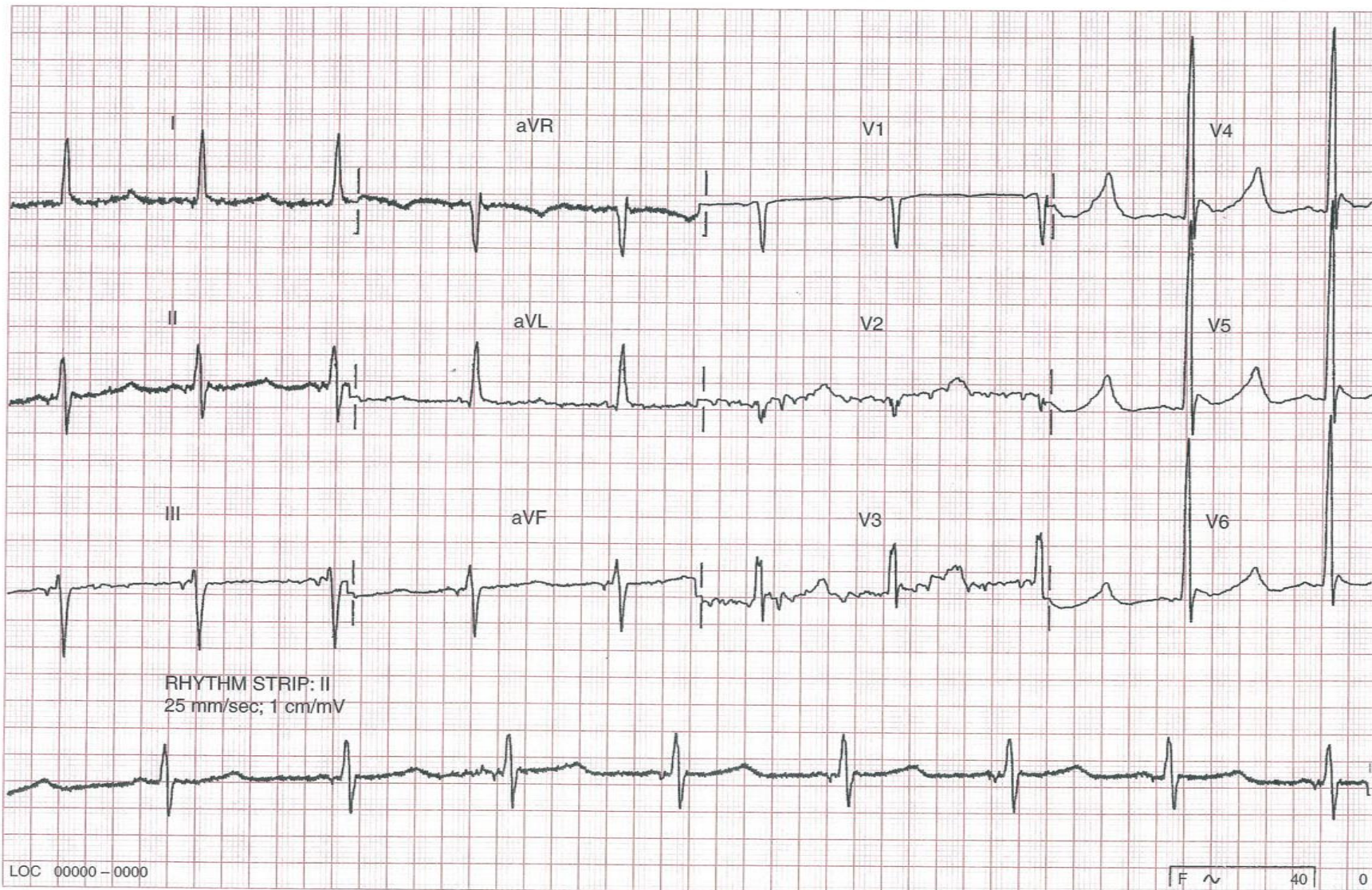
CASE 44

A 48-year-old man with 2 days of chest pain



CASE 75

A thin 79-year-old lady found on the floor at home



CASE 77

A 52-year-old man with marked weakness of both arms and legs

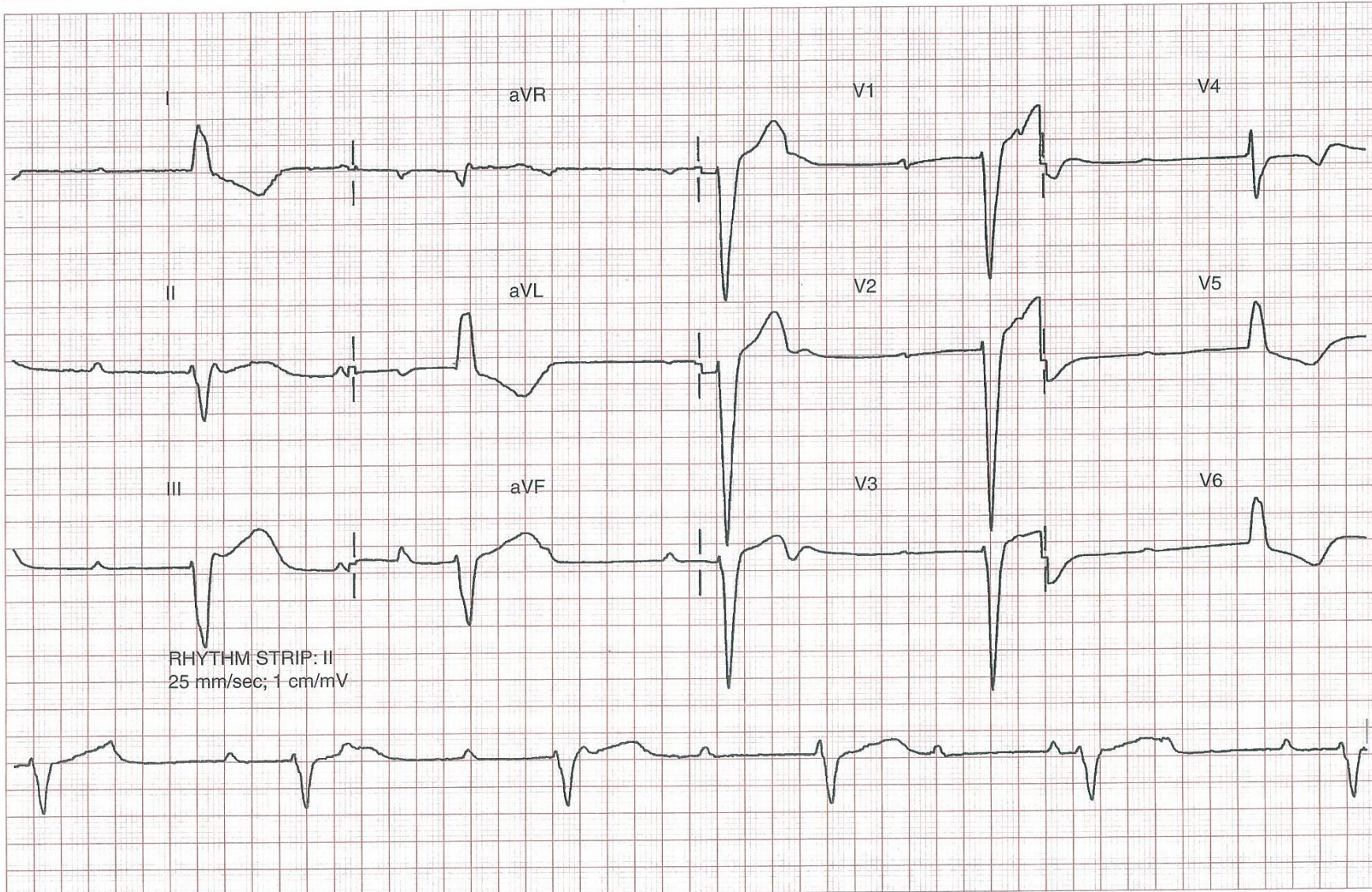


Metabolic problems

1. Hyperkalemia.
-tall peaked T waves, low P wave
2. Hypokalemia.
-prolonged QTU wave
3. Hypothermia.
-prolonged QT, J wave

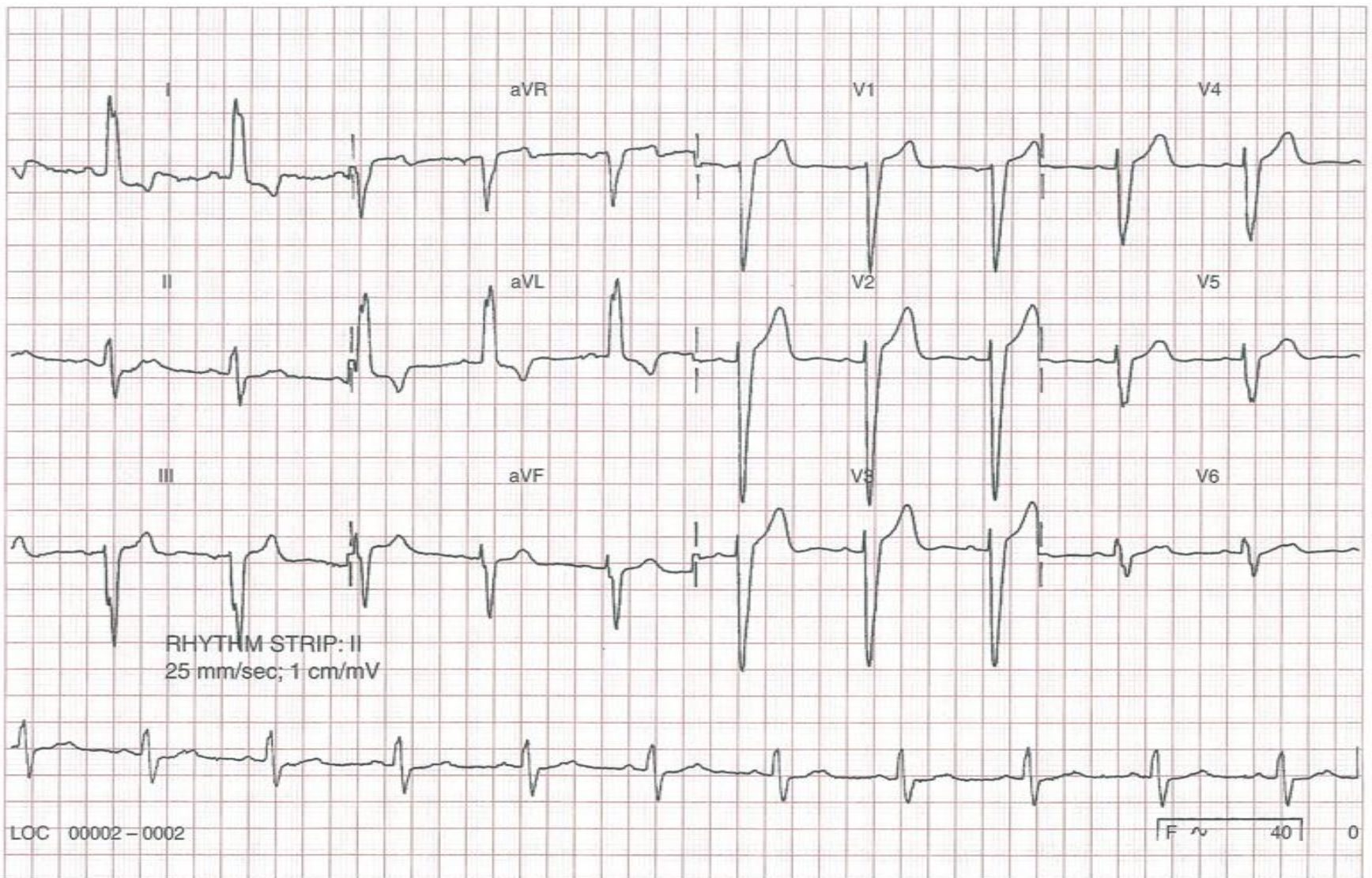
CASE 48

An 84-year-old man presenting with 'collapse'



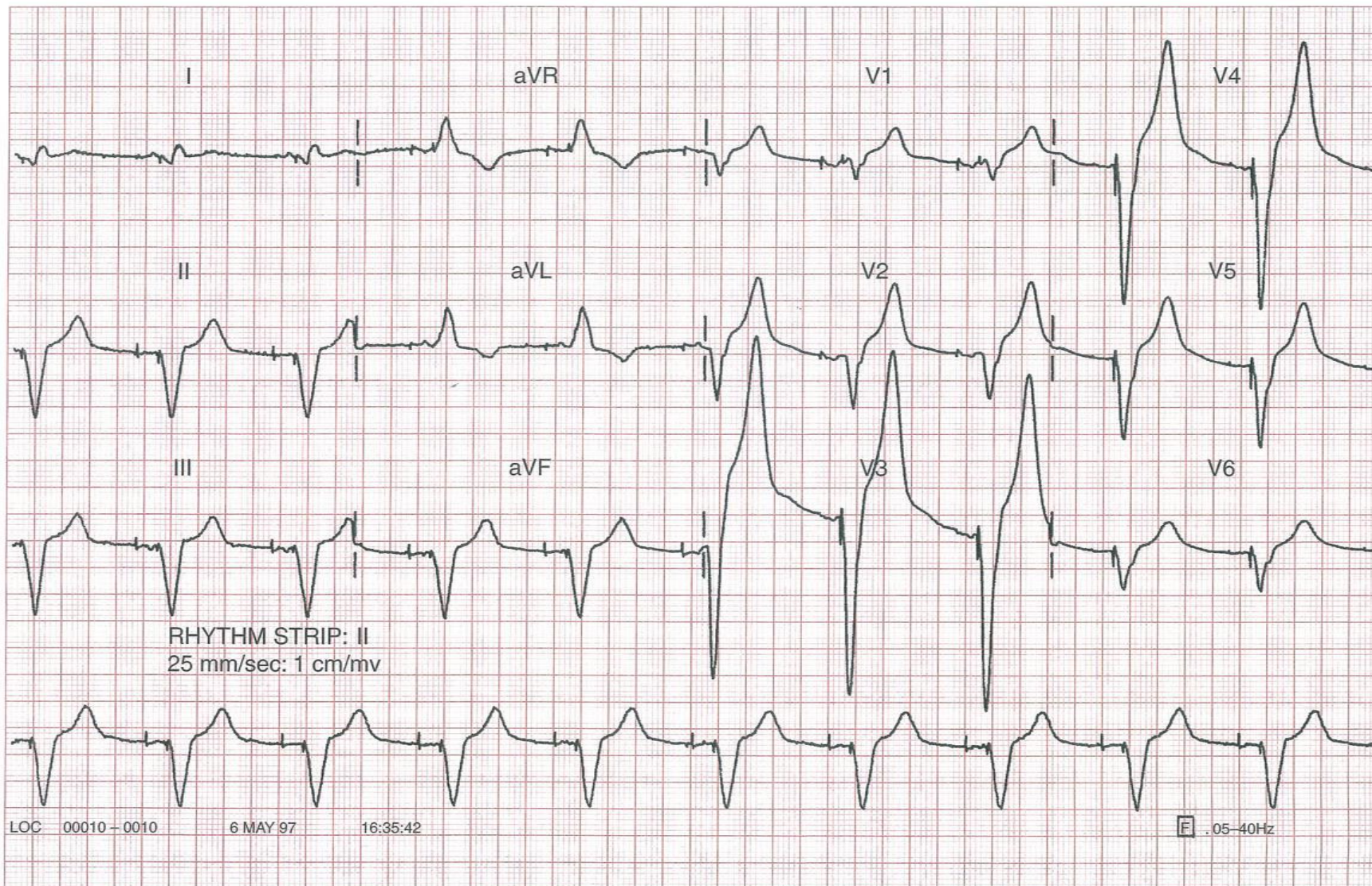
CASE 37

An 85-year-old man with left ventricular failure

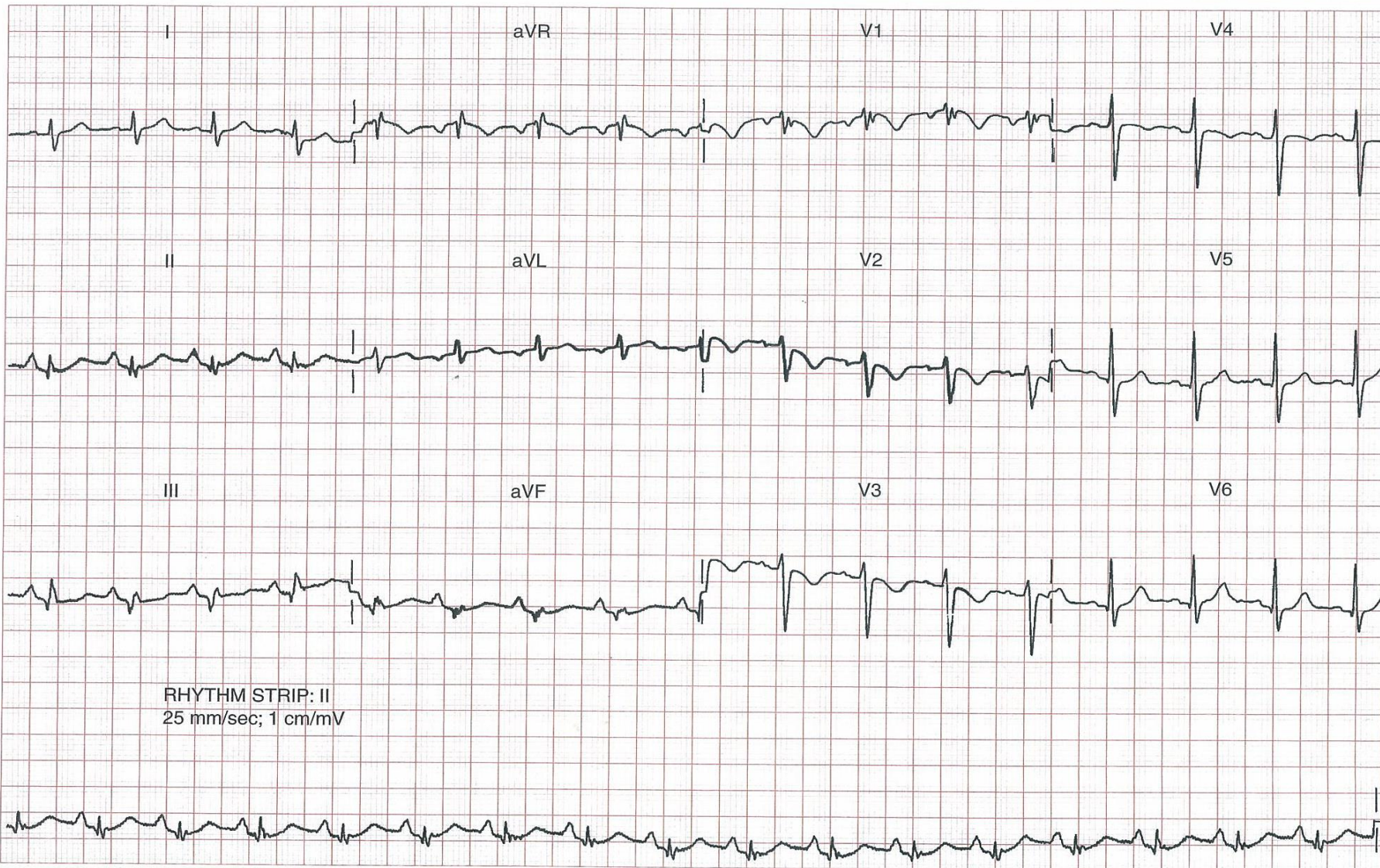


CASE 52

A 60-year-old lady with a history of ischaemic heart disease and blackouts

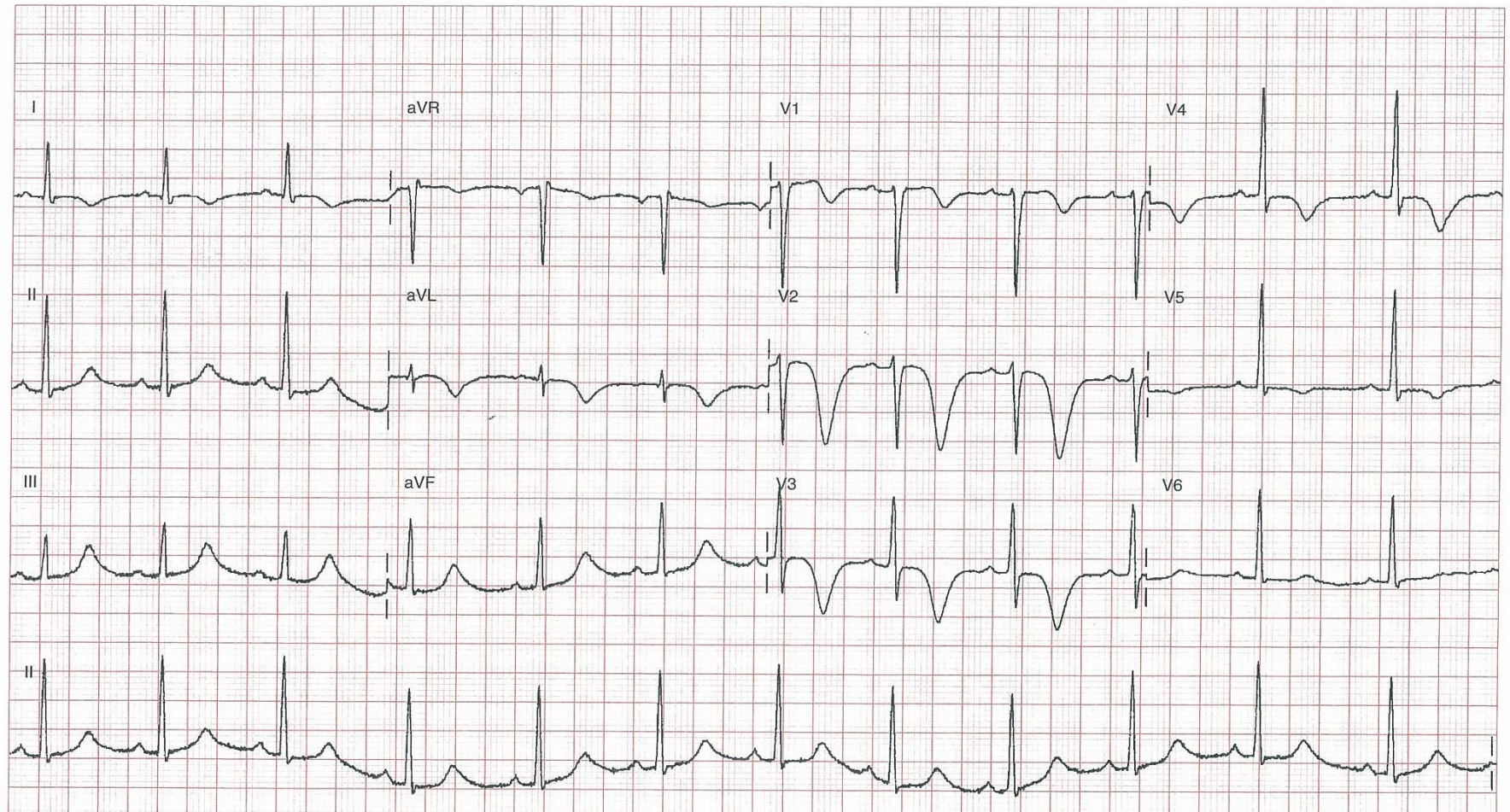


A 60-year-old man with oesophageal cancer develops dyspnoea and hypotension



CASE 57

A 42-year-old man with chest pain



LOC 01156 - 0006 Speed: 25 mm/sec Limb: 10 mm/mV Chest: 10 mm/mV 50 μ 0.15 - 150 Hz

CASE 31

A 66-year-old man with 'crushing' chest pain





Questions?